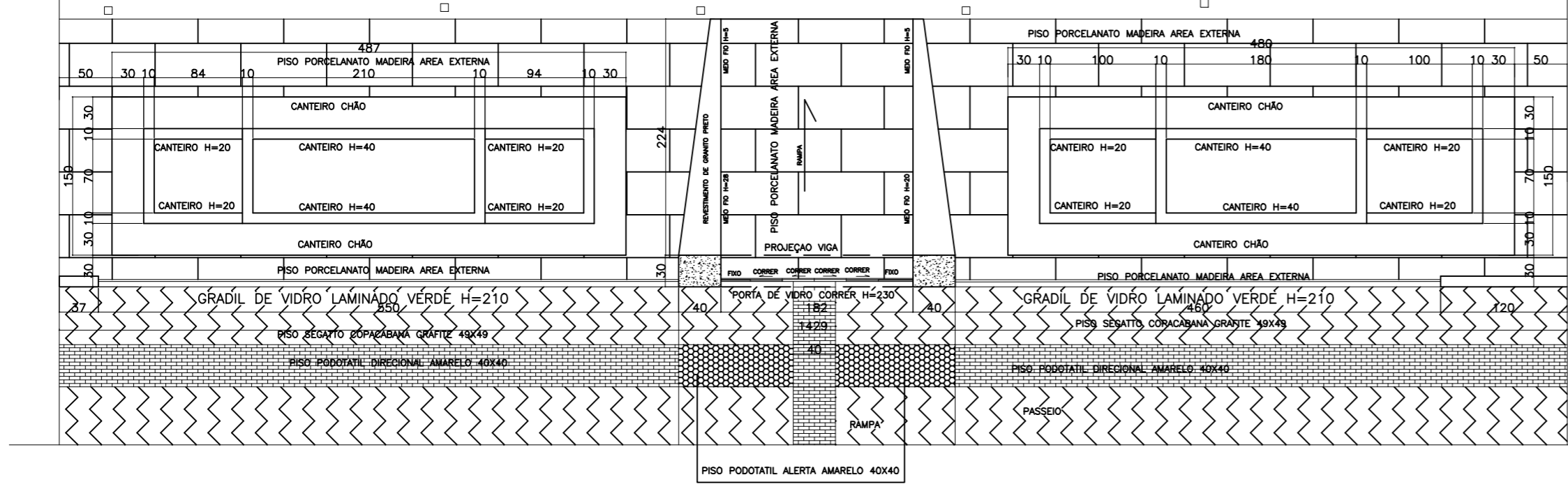
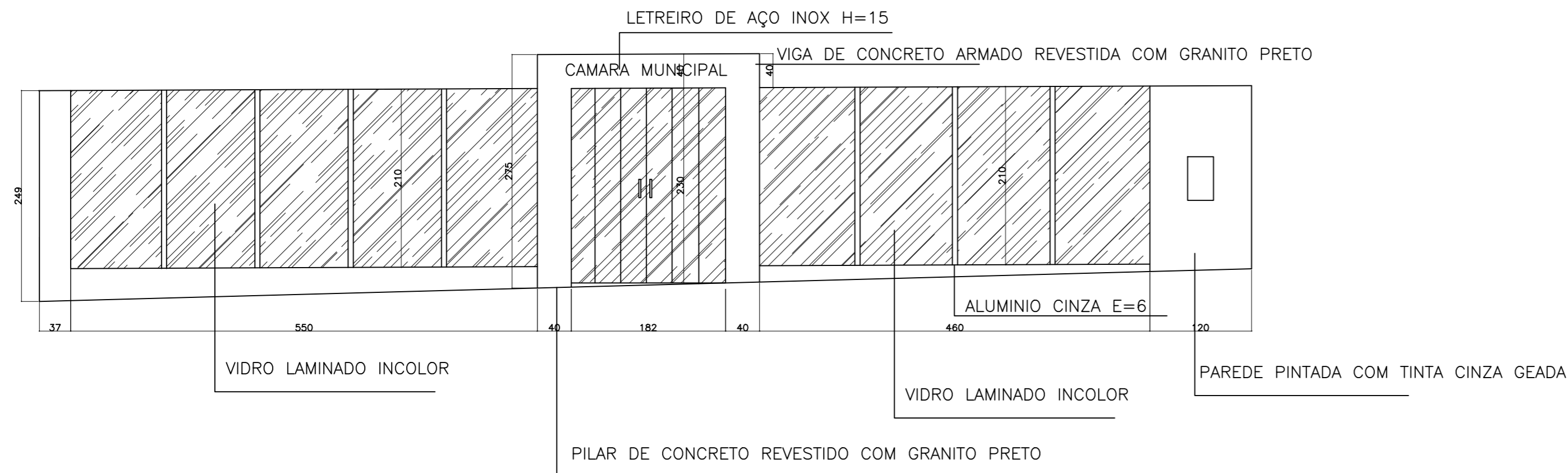


CAMARA MUNICIPAL



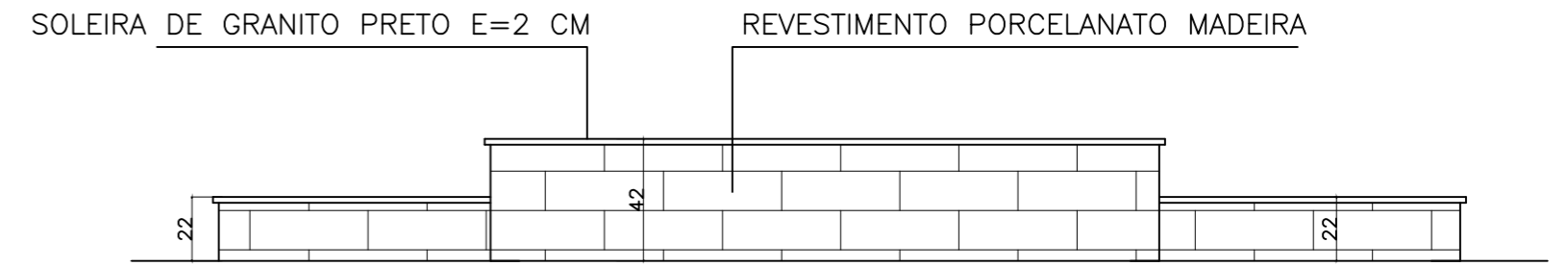
PLANTA BAIXA

escala 1/50



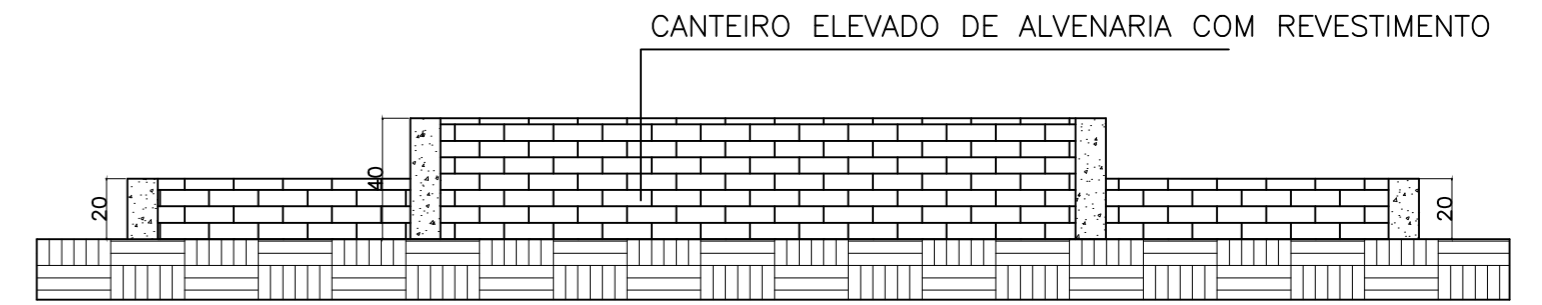
FACHADA FRONTAL

escala 1/50



ELEVAÇÃO CANTEIRO

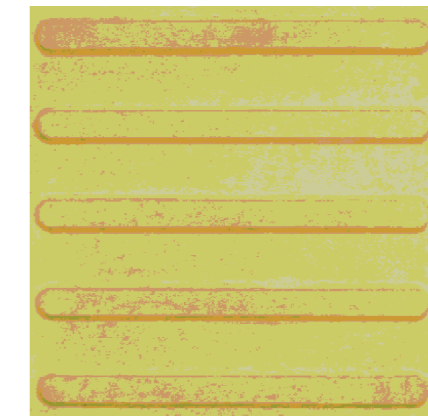
escala 1/25



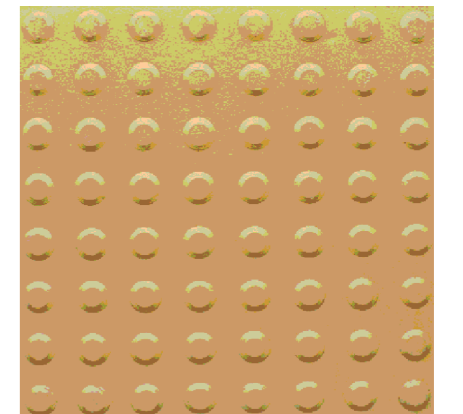
ELEVAÇÃO CANTEIRO

escala 1/25

LEGENDA



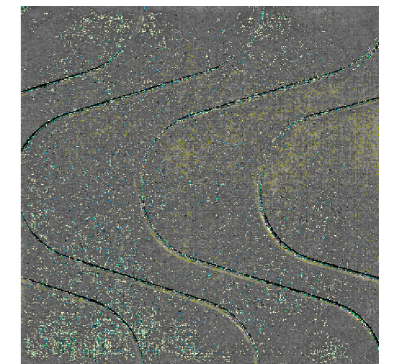
PISO PODOTATIL AMARELO DIRECIONAL



PISO PODOTATIL AMARELO ALERTA



PISO PORCELANATO MADEIRA



PISO PASSEIO COPACABANA GRAFITE

PROJETO	TÍTULO:	Projeto Reforma Arquitetônico Fachada	
	CONTEÚDO:	Planta Baixa ,Fachada Frontal e elevação	
	USO:	INSTITUCIONAL	
	RT PROJETO:	KARINA ERICA DE OLIVEIRA	A42262-2 CAU
COLABORADOR:			DESENHO: A2
RT EXECUÇÃO:		CREA	FOLHA: 01/02
PROPRIETÁRIO:	CAMARA MUNICIPAL DE SÃO GONÇALO DO PARÁ	CNPJ	